


**Annual Report Card**  
**2009/2010**

**Billings Public Schools**

R. Keith Beeman, Ph.D.

415 North 30th Street, Billings MT 59101

Phone: 406-281-5066



**Billings**  
PUBLIC SCHOOLS

# Annual Report Card

## Billings Public Schools

R. Keith Beeman, Ph.D., Superintendent  
 415 North 30th Street, Billings MT 59101  
 Phone: 406-281-5066

The purpose of the Billings Public Schools Report card is to provide information to the public regarding the district's performance on the state assessment and other assessments used by the district to measure student achievement. The district uses such data to monitor student growth, identify strengths and weaknesses, and ultimately improve curriculum and instruction.

This year's report card includes the following components:

- o Adequate Yearly Progress- Proficiency results for students taking the state math and reading assessment.
- o NWEA Results - Percent of students proficient on the Northwest Evaluation Association's Measures of Academic Progress assessment in reading, math, and language
- o Writing Assessment Results - Proficiency results for students in grade 5, 7 and 9 who take the district writing assessment.
- o Graduation and Drop-out Rates - Graduation and Drop-out Rates for the district
- o ACT, SAT, and AP Test Results - College entrance exam results for those students who took the exams.

Total Enrollment on October 5, 2009:

15676

Student Population	Count of Students	Percent of Students
Male	8002	51%
Female	7674	49%
Special Education	1554	10%
Economically Disadvantaged	5624	36%
Caucasian/White	12750	81%
Hispanic	1008	6%
Black	364	2%
American Indian/Alaskan Native	1297	8%
Asian/Pacific Islander	195	1%

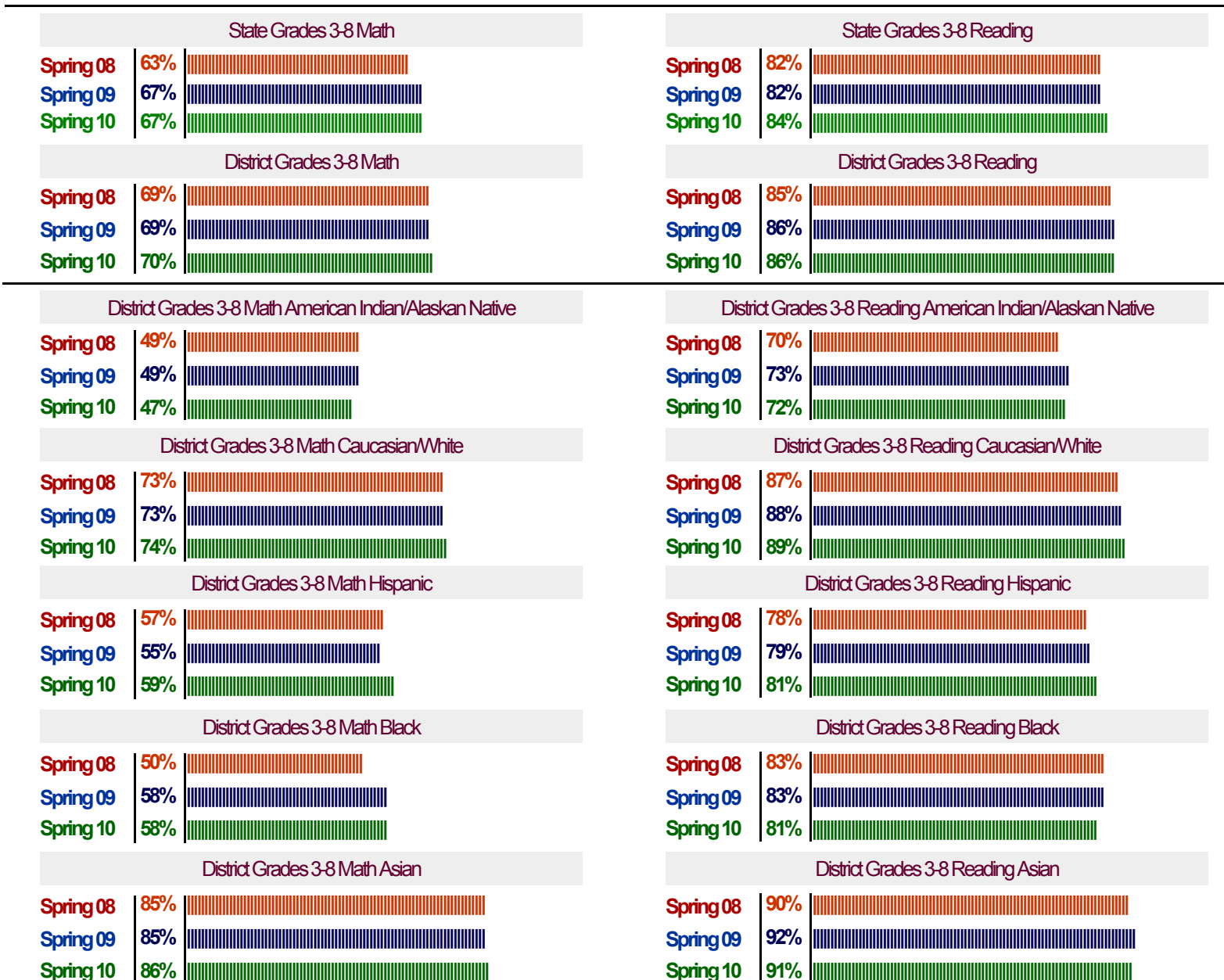
# Adequate Yearly Progress

## Billings Public Schools - District Three Year Trend

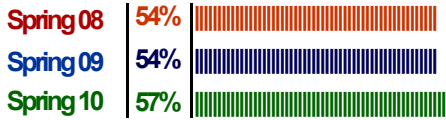
Percent of Students that Met or Exceeded Proficiency Standard

Adequate Yearly Progress (AYP) is one of the cornerstones of the federal Elementary and Secondary Education Act (ESEA) signed into law in January 2002, as the No Child Left Behind (NCLB) Act. In Montana, AYP is primarily a measure of year-to-year student achievement on the Montana Comprehensive Assessment System (MontCAS) in reading and mathematics. One of the requirements of NCLB is for states to set an Annual Measurement Objective (a target) for the percent of students to achieve proficiency on the state assessment. The Annual Measurement Objective gradually ratchets up such that by 2013-2014 all (100%) of students will achieve proficiency in reading and mathematics. AYP is determined, in part, by whether or not a school, district, or student subgroup meets the required level of proficiency for that school year. Each school's enrollment is divided into potentially 11 subgroups along the lines of race and ethnicity, social economic status, Limited English Proficiency, and students with disabilities. In 2009-2010, the Annual Measurement Objective for reading was 83% and for mathematics was 68%. AYP is also determined by the participation rate on the assessment (95%), the attendance rate at elementary schools (80%), and the graduation rate at high schools (85%).

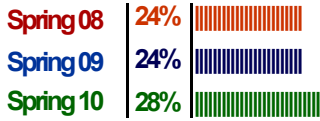
*Testing Populations with Fewer than 30 Students are not reported.*



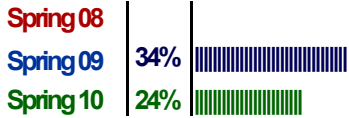
District Grades 3-8 Math Economically Disadvantaged



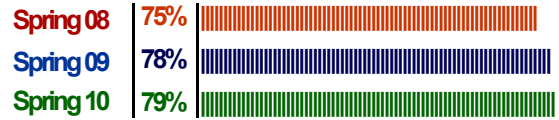
District Grades 3-8 Math Special Education



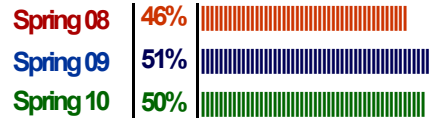
District Grades 3-8 Math Limited English Proficient



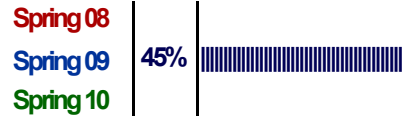
District Grades 3-8 Reading Economically Disadvantaged



District Grades 3-8 Reading Special Education



District Grades 3-8 Reading Limited English Proficient



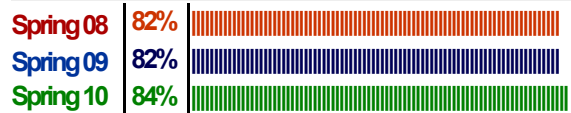
State High School Math



District High School Math



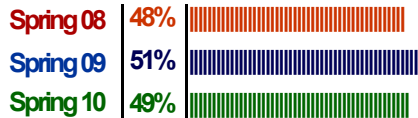
State High School Reading



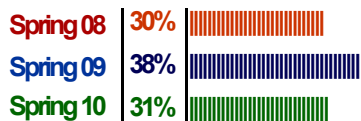
District High School Reading



District High School Math Economically Disadvantaged



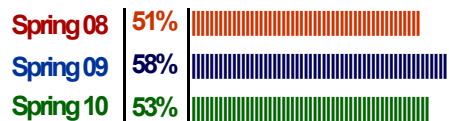
District High School Math Special Education



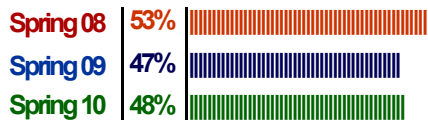
District High School Reading Economically Disadvantaged



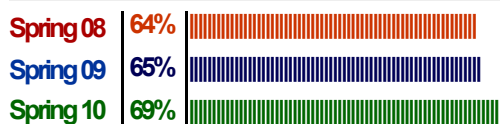
District High School Reading Special Education



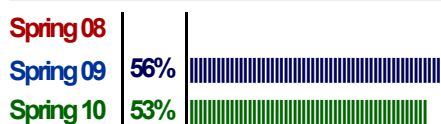
District High School Math American Indian/Alaskan Native



District High School Math Caucasian/White



District High School Math Hispanic



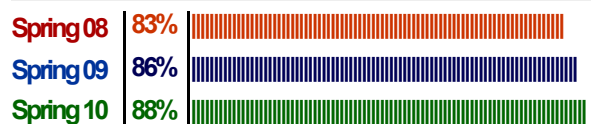
District High School Math Asian



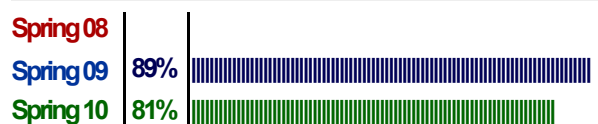
District High School Reading American Indian/Alaskan Native



District High School Reading Caucasian/White



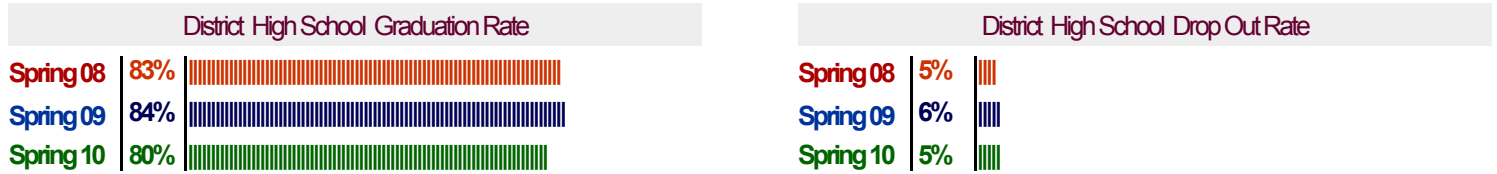
District High School Reading Hispanic



District High School Reading Asian

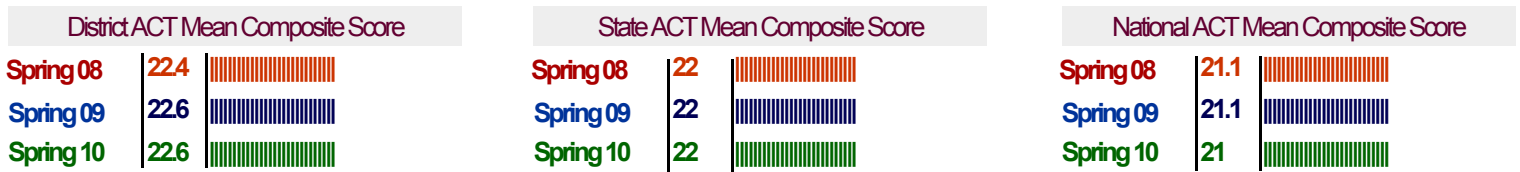


The Graduation Rate is calculated by the Office of Public Instruction. Since completer and dropout data are not reported until after the beginning of the school year, the graduation rate from the previous year is reported. (e.g. 2009 graduation rate reported in 2010)

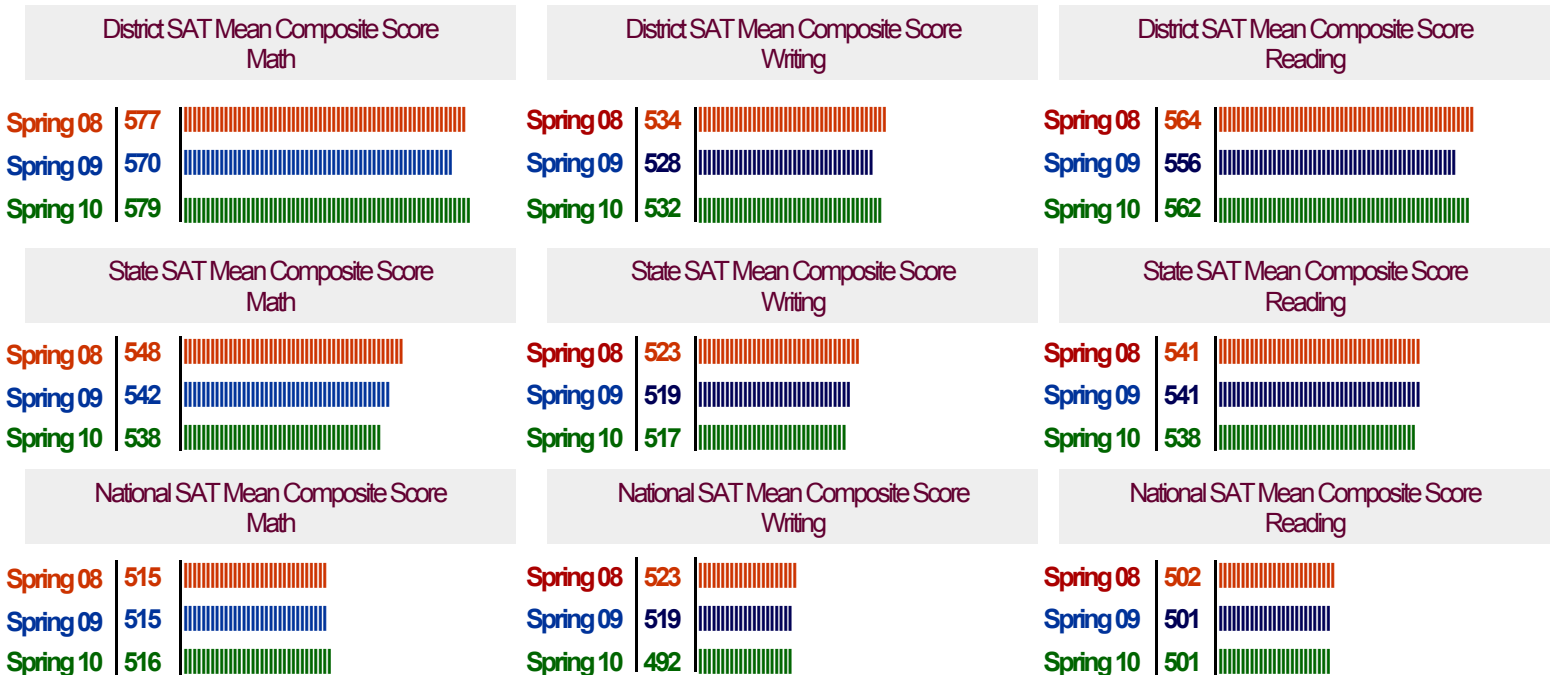


### Other District Assessments

Billings Public Schools average composite score on the ACT College Entrance exam has consistently been above the state and national average. Approximately 48+% of seniors and 24% of juniors took the ACT Entrance Exam in 2009-2010.

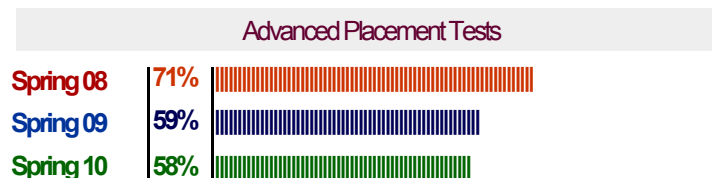


High school seniors in Billings Public Schools score above the state and national average in all subject areas on the SAT. Approximately 14% of seniors in the class of 2009-2010 took the SAT.



Billings Public Schools administered Advanced Placement Exams to 255 students in the spring of 2010. A score of 3 or higher on an AP Exam can qualify students for college credit depending on the individual college entrance requirements.

### Percent of Students Scoring a 3 or higher on the Advanced Placement Exams

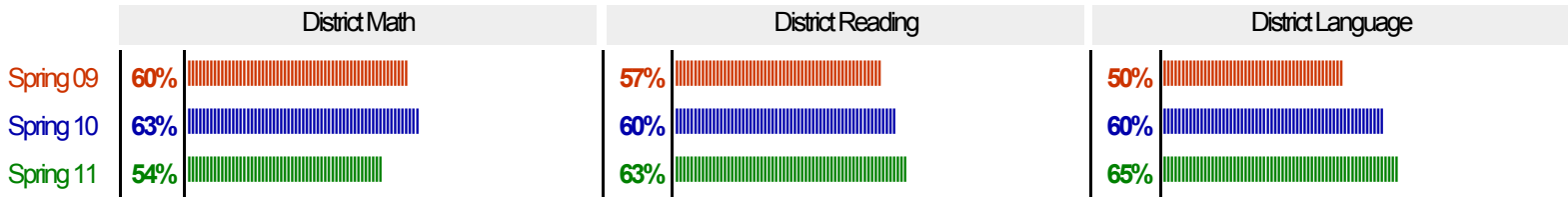


# NWEA Measures of Academic Progress

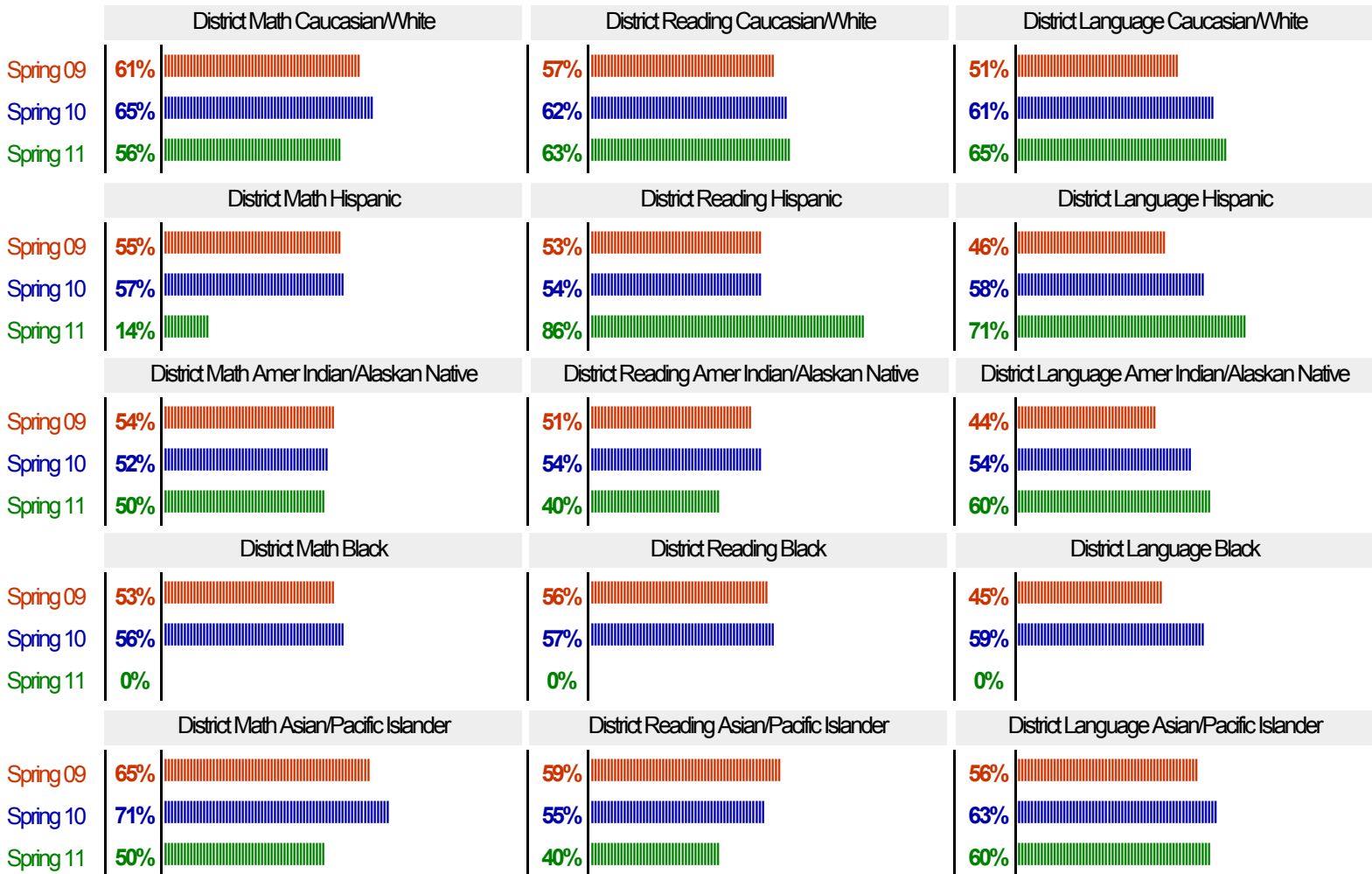
## Billings Public Schools - District Three Year Trend

### Percent of Students that Met or Exceeded Proficiency Standard

Achievement Level Tests — NWEA Measures of Academic Progress — These growth assessments are given in the fall and spring in the subjects of Reading, Math, and Language in grades 4-6 and each spring in grades 7-8. Beginning in 2011-2012, students in grades 9-11 will also be assessed each fall and spring to measure student growth.



#### Percent of Students That Met or Exceeded Proficiency Standard by Ethnicity



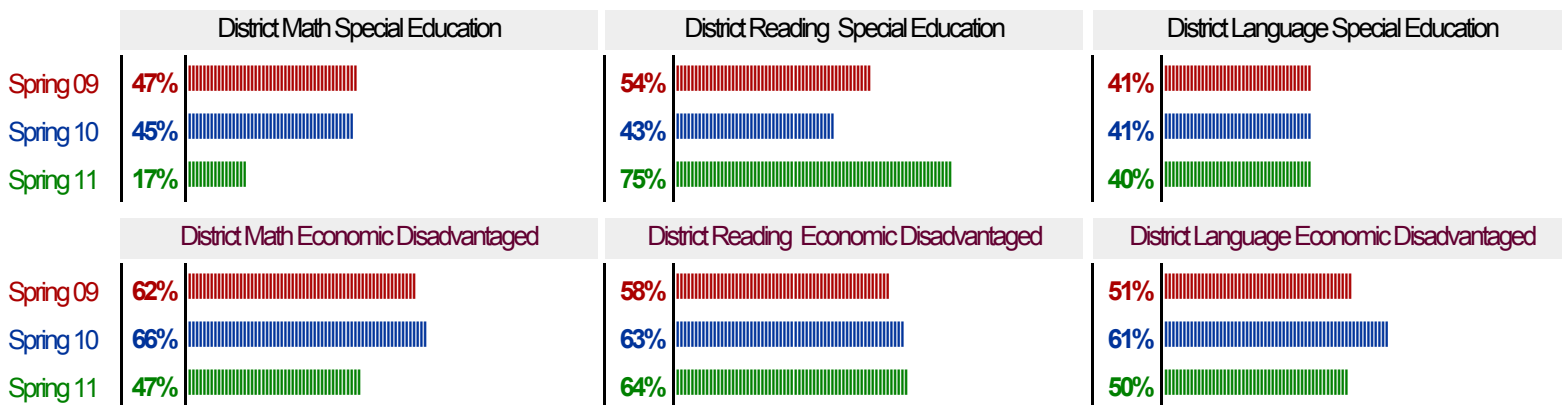
Testing Populations with Fewer than 10 Students  
are not reported.

# NWEA Measures of Academic Progress

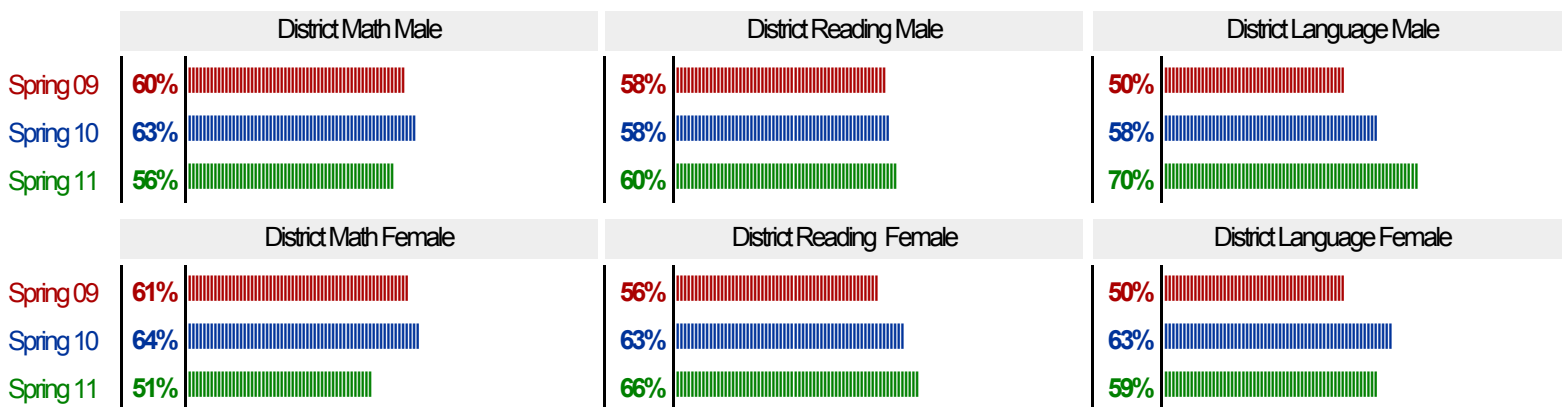
## Billings Public Schools - District Three Year Trend

### Percent of Students that Met or Exceeded Proficiency Standard

#### Percent of Students That Met or Exceeded Proficiency Standard by Special Program



#### Percent of Students That Met or Exceeded Proficiency Standard by Gender



**Testing Populations with Fewer than 30 Students  
are not reported.**

# District Writing Assessments

## Billings Public Schools - District Three Year Trend

Percent of Students that Met or Exceeded Proficiency Standard

### Testing Grade: 5

		Ideas and Content - Percent of Students Proficient	Organization - Percent of Students Proficient
2007/2008 2008/2009 2009/2010	39%		32%
	61%		51%
	51%		38%
		Voice - Percent of Students Proficient	Word Choice - Percent of Students Proficient
2007/2008 2008/2009 2009/2010	41%		28%
	65%		52%
	48%		38%
		Sentence Fluency - Percent of Students Proficient	Conventions - Percent of Students Proficient
2007/2008 2008/2009 2009/2010	30%		38%
	44%		55%
	38%		48%

### Testing Grade: 7

		Ideas and Content - Percent of Students Proficient	Organization - Percent of Students Proficient
2007/2008 2008/2009 2009/2010	58%		56%
	59%		48%
	59%		53%
		Voice - Percent of Students Proficient	Word Choice - Percent of Students Proficient
2007/2008 2008/2009 2009/2010	58%		46%
	75%		60%
	62%		55%
		Sentence Fluency - Percent of Students Proficient	Conventions - Percent of Students Proficient
2007/2008 2008/2009 2009/2010	54%		59%
	49%		56%
	53%		60%

### Testing Grade: 9

		Ideas and Content - Percent of Students Proficient	Organization - Percent of Students Proficient
2007/2008 2008/2009 2009/2010	57%		54%
	53%		53%
	59%		59%
		Voice - Percent of Students Proficient	Word Choice - Percent of Students Proficient
2007/2008 2008/2009 2009/2010	71%		69%
	76%		61%
	81%		72%
		Sentence Fluency - Percent of Students Proficient	Conventions - Percent of Students Proficient
2007/2008 2008/2009 2009/2010	63%		68%
	56%		62%
	66%		63%

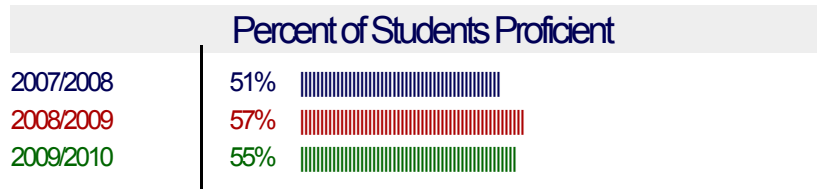
# Montana University System Writing Assessment

## District Three Year Trend

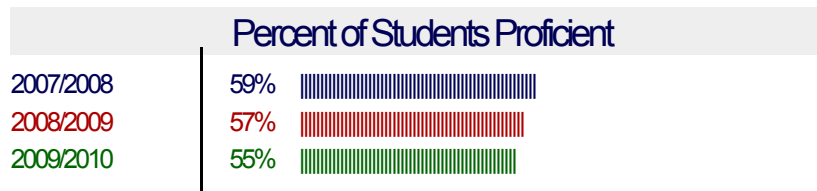
Percent of Students that Met or Exceeded Proficiency Standard

All the high schools in Montana administer the Montana University System Writing Assessment (MUSWA) to all grade 11 students. Students must achieve a minimum score of 3.5 on the MUSWA. If a student does not achieve the minimum standard they may be admitted provisionally to a four year degree program on any Montana University System campus.

### Senior High School



### Skyview High School



### West High School

